

SKF Microlog and @Analyst Serial Communication Setup Guide

‘Serial over USB’

This document details important setup instructions not described in the user manual for the following products:

- CMXA-75
- CMXA-80

Overview

This document details the following procedures:

- **Device upgrade** – instructions for upgrading and configuring your Microlog device to support serial PC communications over USB.
- **Removal of Windows Mobile Device Centre** – for existing customers that are migrating from using Windows Mobile Device Centre for device communications.
- **SKF Sync Driver setup** – instructions on installing and configuring the necessary components on your PC for communicating with your device over a virtual COM port.
- **Configuring @A/TCT** – instructions for configuring SKF @Analyst/TCT to work with the new SKF Sync Driver.

Refer to the appropriate section for each procedure.

Minimum system requirements

SKF @Analyst – at least Version 9.0.1033.1

SKF @Analyst TCT - at least Version 9.0.1033.1 (for users using TCT)

Operating systems - Microsoft Windows 7 (32 or 64-bit) or Windows 10 (32 or 64-bit)

Upgrade Microlog

This procedure details steps necessary to upgrade your Microlog system firmware using removable media and configure the device for serial communications.

CAUTION!

When prompted by the OS loader application, click Yes to back up data during the installation. The data will be automatically restored to the unit at the end of the firmware installation process only if you confirm that backup is required.

Requirements

The following items are required to complete this procedure:

- Microlog unit to be updated
- An SD or SD-HC card*
- PC with a memory card reader compatible with selected media

* Required capacity will be dependent on routes and module data stored on the Microlog device, minimum 16GB recommended

Upgrade Overview

Step 1 - Install the OS Loader on the host PC.

Step 2 – Create removable media update.

Step 3 – Install update on device.

Step 4 – Configure device for serial communications.

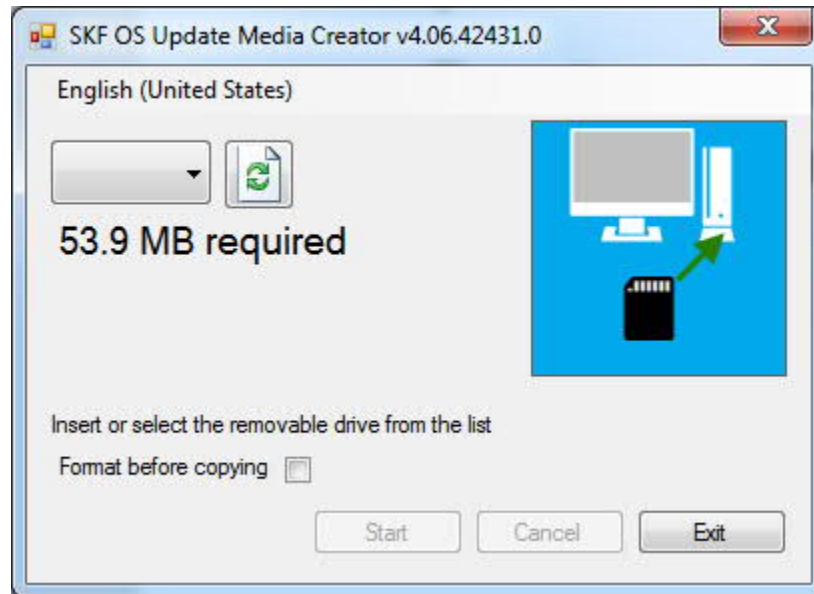
Step 1 – Install the OS Loader on the host PC

- ☐ Download the latest installation file **Microlog OS Loader_v4.06.xxxxx.msi** available from [Microlog Downloads Page](#)
- ☐ Double-click the **Microlog OS Loader_v4.06.xxxxx.msi** file. An installation wizard launches. Follow the on-screen instructions to install the **Microlog OS loader**. This will install two different programs:
 - **Create OS Update Media** - This software should be used to create an SD card to perform a firmware update (recommended).

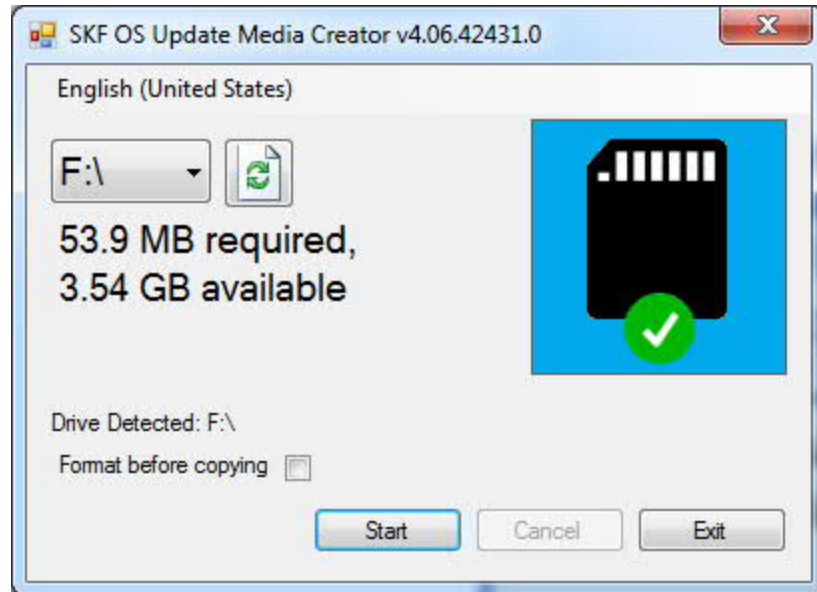
- **Update OS(Direct)** - Legacy support for device firmware upgrade using Windows Mobile Device Centre, this is not compatible with a PC configured to support ' *Serial over USB*'

Step 2 – Create removable media update

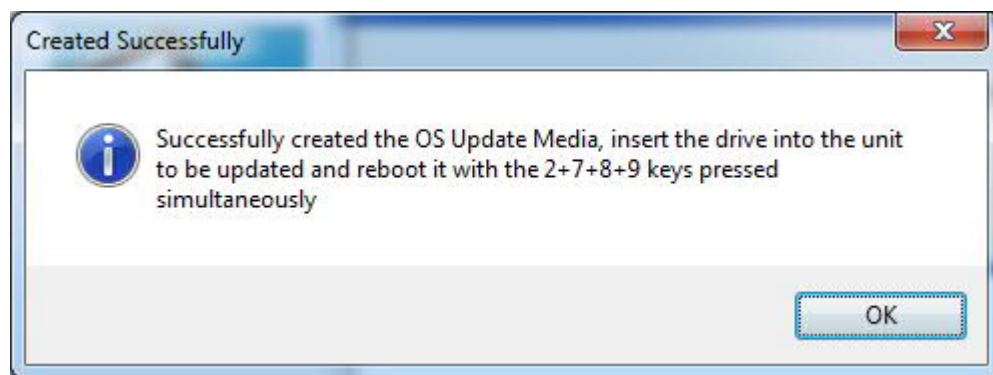
- ❑ From the PC, select **Start / All Programs / SKF / Microlog / Create OS Update Media**. The **SKF OS Update Media Creator** application will then launch.



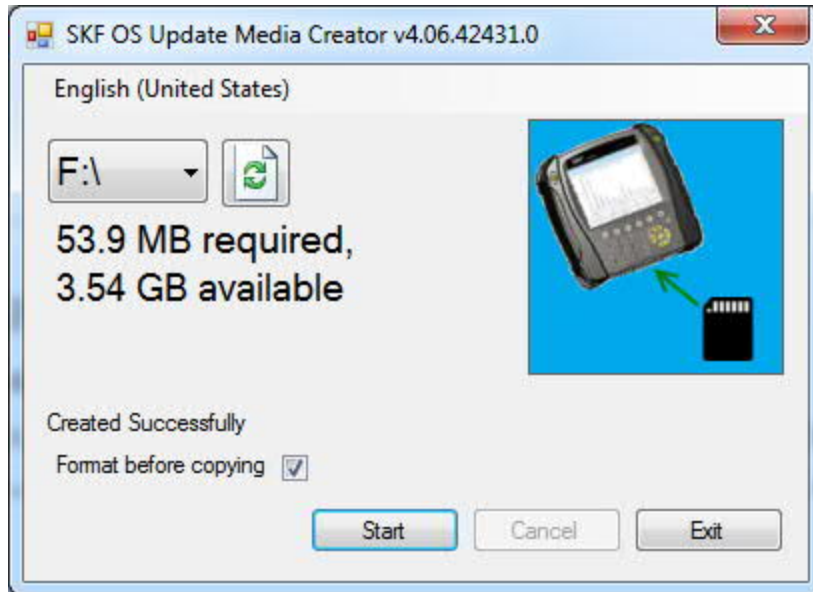
- ❑ Insert an SD card into the card reader on the computer.
 - *If you have data on the card that needs to be removed to create space for the firmware update, click the **format before copying** checkbox. This will delete all data residing on the card (recommended).*
- ❑ Select the removable memory from the drop down menu. To begin creating the update media, confirm there is now an image of a check in a green circle visible on the screen. Click the **Start** button to create the OS firmware update on the chosen media.



- ❑ When the process has completed, a dialog box displays on the screen; click **OK** to proceed.



- ❑ When the firmware updater is installed on the removable media, the text on the screen will change to display "Created Successfully". In addition, a picture of an SD card being inserted into a Microlog device will display.

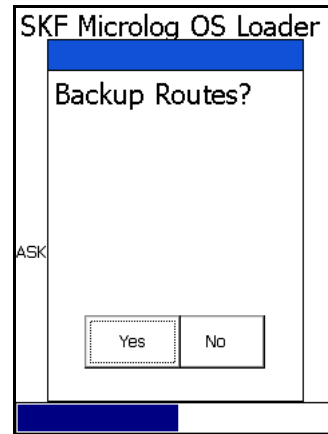
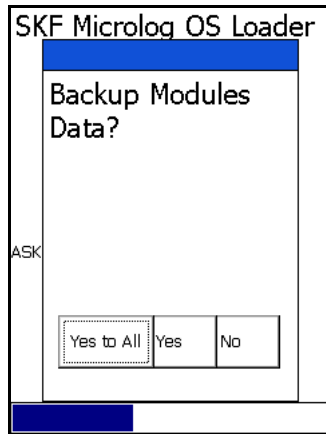


Step 3 - Install update on device

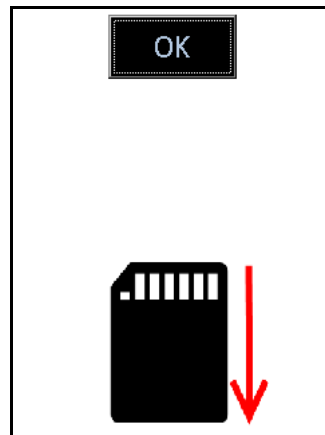
- ☐ Insert the SD card into the device that requires upgrading. Simultaneously press and hold the 2, 7, 8 and 9 buttons on the keypad to restart the unit.
- ☐ The firmware update application launches on the unit. Press the **OK** button to proceed.



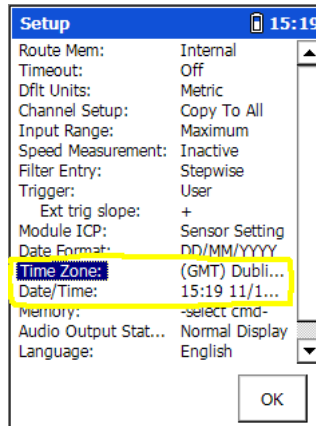
- ☐ The unit prompts whether stored route and module data should be backed up. Select either **Yes** or **No** to continue. (**Yes To All** will automatically include route data in the backup).



- ☐ When the firmware update process is complete, an image appears showing an SD card being removed.



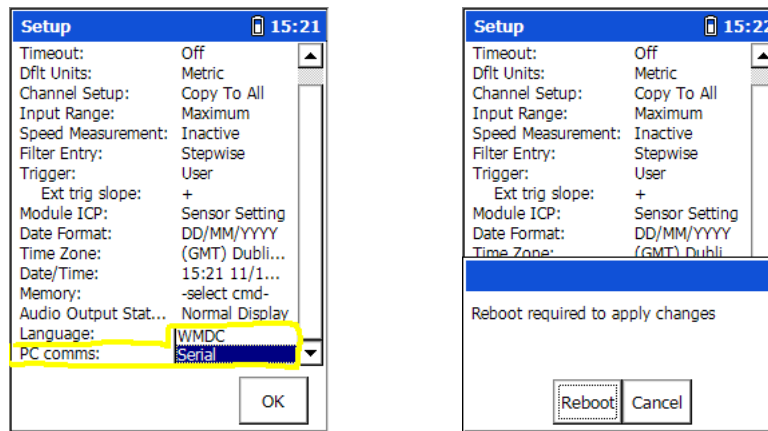
- ☐ Remove the SD card and then press **Ok**. The unit will reboot to complete the Upgrade process.
- ☐ Once the unit has been reboot the time zone and date / time will need to be set on the device.



After successful completion, your unit is up-to-date with the latest Microlog firmware. Any previously licensed features are still licensed, and calibration data is restored automatically.

Step 4 – Configure device for serial communications

- ❑ From the setup screen select **Serial** from the **PC comms** drop down selection then select **Apply**. In order to apply this change the unit will require a reboot, select the **Reboot** option to proceed.



After reboot the device will now be able to communicate with a PC setup with “Serial over USB” comms for Microlog (see next sections).

WMDC Removal

This section describes the removal of Windows Mobile Device Center (WMDC) from Window 7 PC, which is replaced by the SKF Sync Driver. If WMDC is not installed, skip to the next section.

CAUTION!

The new driver and WMDC cannot exist on the same installation of the host PC. It is extremely important that WMDC is uninstalled before installing the new driver.

Do not install the WMDC when New SKF Sync driver is installed and vice versa.

Requirements

The following items are required to complete this procedure:

- PC with WMDC installation to be removed

Removal Overview

Step 1 – Launch the Windows Uninstaller.

Step 2 – Remove WMDC from Windows installation

Step 1 – Launch the Windows Uninstaller

- ☐ Click on the Windows start-menu icon (or press the Windows button on the keyboard) and click on the settings Icon



- ☐ On the settings page, click on 'Apps'



Apps

Uninstall, defaults, optional features

- ❑ Click on 'Windows Mobile Device Center' and then click on 'Uninstall'

Settings

Home

Find a setting

Apps

Apps & features

Default apps

Apps & features

App	Size	Company	Version	Buttons
Windows Mobile Device Center	27.4 MB	Microsoft Corporation	6.1.6965.0	Modify, Uninstall
Windows Mobile Device Center Driver Update...	44.4 MB	Microsoft Corporation		

- ❑ Repeat for 'Windows Mobile Device Center Driver Update'

Note that removal of applications can also be achieved through the control panel: Control Panel -> Programs -> Uninstall

SKF Sync Driver Setup

This section describes the installation of the SKF Sync driver on a PC. The SKF Sync driver replaces the end-of-life Microsoft WMDC communications mechanism for communications with the Microlog.

Requirements

The following items are required to complete this procedure:

- PC with Microsoft Windows 7 (32 or 64-bit) or Windows 10 (32 or 64-bit).
- User with administrator rights

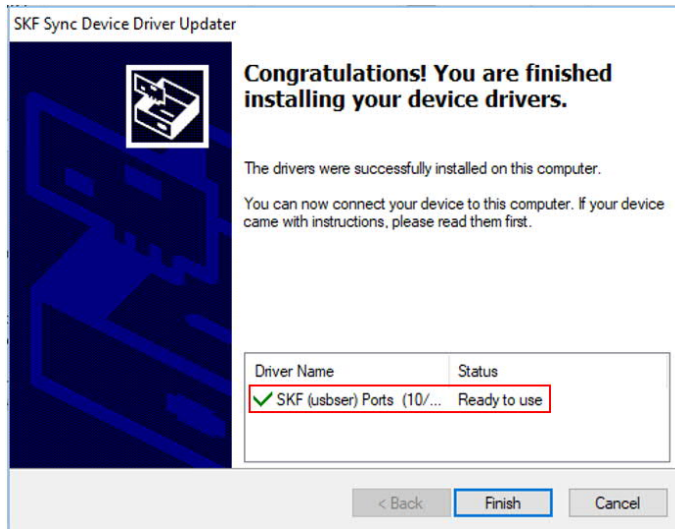
Installation Overview

Step 1 – Launch the SKF Sync driver installer.

Step 2 – Connect the Microlog using the standard (existing) Microlog USB cable.

Step 1 – Launch the SKF Sync driver installer

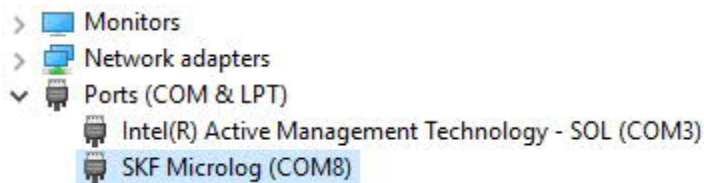
- ☐ Download the latest installation file **SKF_Sync_Driver_Installer_v1.00.xxxxx.msi** available from [Microlog Downloads Page](#)
- ☐ Double-click the **SKF_Sync_Driver_Installer_v1.00.xxxxx.msi** file. An installation wizard launches. Follow the on-screen instructions to install the **SKF Sync driver**.
- ☐ If prompted for User Account Control, Click on Yes to proceed with the installation wizard.
- ☐ Click on finish to install the **SKF Sync driver**.



Step 2 – Connect using the standard Microlog USB cable

- ☐ On the Microlog, from the setup page, ensure that the device is set up to use **serial** instead of WMDC communications.
- ☐ Connect the Microlog to the PC using the standard Microlog USB cable.

The device shows as below Device Manager (Go to Control Panel-> Hardware and Sound, click on Device Manager under Devices and Printers)



- ☐ The Microlog is now ready for communications with @ptitude Analyst.

Configuring @A/TCT

This section describes the steps required to configure SKF @Analyst/TCT to work with the new SKF Sync driver on a PC.

Requirements

The following items are required to complete this procedure:

- PC with SKF @Analyst/TCT installed, minimum Version 9.0.1033.1

Communication Type

The communication type should be set to USB.

